

ДЕМПФЕРЫ PD-S



Архангельск (8182)63-90-72
Астана (7172)727-132
Астрахань (8512)99-46-04
Барнаул (3852)73-04-60
Белгород (4722)40-23-64
Брянск (4832)59-03-52
Владивосток (423)249-28-31
Волгоград (844)278-03-48
Вологда (8172)26-41-59
Воронеж (473)204-51-73
Екатеринбург (343)384-55-89

Иваново (4932)77-34-06
Ижевск (3412)26-03-58
Иркутск (395)279-98-46
Казань (843)206-01-48
Калининград (4012)72-03-81
Калуга (4842)92-23-67
Кемерово (3842)65-04-62
Киров (8332)68-02-04
Краснодар (861)203-40-90
Красноярск (391)204-63-61
Курск (4712)77-13-04
Липецк (4742)52-20-81

Магнитогорск (3519)55-03-13
Москва (495)268-04-70
Мурманск (8152)59-64-93
Набережные Челны (8552)20-53-41
Нижний Новгород (831)429-08-12
Новокузнецк (3843)20-46-81
Новосибирск (383)227-86-73
Омск (3812)21-46-40
Орел (4862)44-53-42
Оренбург (3532)37-68-04
Пенза (8412)22-31-16

Пермь (342)205-81-47
Ростов-на-Дону (863)308-18-15
Рязань (4912)46-61-64
Самара (846)206-03-16
Санкт-Петербург (812)309-46-40
Саратов (845)249-38-78
Севастополь (8692)22-31-93
Симферополь (3652)67-13-56
Смоленск (4812)29-41-54
Сочи (862)225-72-31
Ставрополь (8652)20-65-13

Сургут (3462)77-98-35
Тверь (4822)63-31-35
Томск (3822)98-41-53
Тула (4872)74-02-29
Тюмень (3452)66-21-18
Ульяновск (8422)24-23-59
Уфа (347)229-48-12
Хабаровск (4212)92-98-04
Челябинск (351)202-03-61
Череповец (8202)49-02-64
Ярославль (4852)69-52-93

Россия (495)268-04-70 Киргизия (996)312-96-26-47 Казахстан (772)734-952-31

Единый адрес для всех регионов: www.verderair.nt-rt.ru || vru@nt-rt.ru

Verderair

PD-S10

Description

Air Operated Double Diaphragm Pumps are having a pulsating flow. This will lead to vibrations and pipe-line losses due to the pressure changes in the discharge pipeline. In processes where pulsation in the fluid stream needs to be minimized, the Verderair PD-S dampeners can be used.



Your benefits

- Less vibration in the installation
- Smoother flow
- Better accuracy of instrumentation in the discharge line
- Less maintenance cost of the pipework

Technical data		Internals		
Weight [kg]	Fluid & air section	GG	0,8	
		EA	0,9	
		AG	1	
		AA	1,1	
		SG	2,1	
		SA	2,2	
Temperature [°C]	Fluid & air section	GG - EA	EO - TO	70
		AG - SG	EO - TO	80
		AA - SA	EO - TO	100
Air connection		R 1/8		
Liquid connections		3/8"		

Code PD-S10 No.1 No.2 No.3 No.4			
No.1 Fluid section ⚠ A = Aluminium ⚠ S = Stainless Steel ⚠ G = Conductive PE E = UHMW PE		No.2 Air section A = Polyamide ⚠ G = Conductive PE	
		No.3 Diaphragms EO = EPDM overmolded TO = PTFE overmolded	
		No. 4 Connections TB = Threaded BSP(f) TN = Threaded NPT(f)	

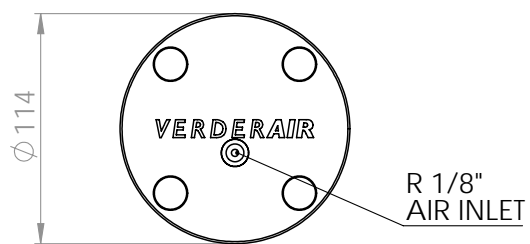
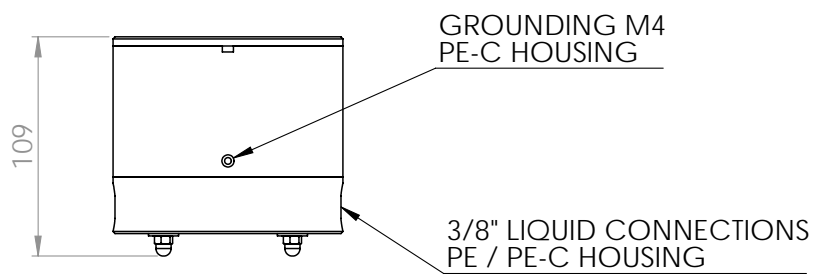
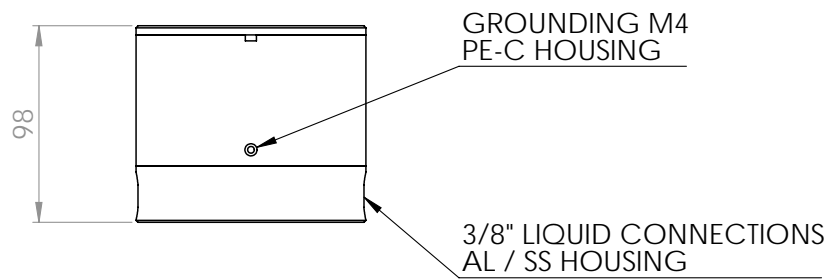
EXAMPLE DAMPENER TYPE
PD-S10 AA TO TB

NOTE not all combinations are available

⚠ II 2 GD c II BTx

Verderair

PD-S10



Dimensions in mm



Verderair

PD-S15

Description

Air Operated Double Diaphragm Pumps are having a pulsating flow. This will lead to vibrations and pipe-line losses due to the pressure changes in the discharge pipeline. In processes where pulsation in the fluid stream needs to be minimized, the Verderair PD-S dampeners can be used.



Your benefits

- Less vibration in the installation
- Smoother flow
- Better accuracy of instrumentation in the discharge line
- Less maintenance cost of the pipework

Technical data		Internals		
Weight [kg]	Fluid & air section	GG	1,9	
		EA	2,1	
		AG	2,5	
		AA	2,7	
		SG	4,4	
		SA	4,6	
Temperature [°C]	Fluid & air section	GG - EA	EO - TO	70
		AG - SG	EO - TO	80
		AA - SA	EO - TO	120
Air connection				R 1/8
Liquid connections				1/2"

Code PD-S15 No.1 No.2 No.3 No.4.

No.1 Fluid section

- A = Aluminium
- S = Stainless Steel
- G = Conductive PE
- E = UHMW PE

No.2 Air section

- A = Polyamide
- G = Conductive PE

No.3 Diaphragms

- EO = EPDM overmolded
- TO = PTFE overmolded

No. 4 Connections

- TB = Threaded BSP(f)
- TN = Threaded NPT(f)

EXAMPLE DAMPENER TYPE

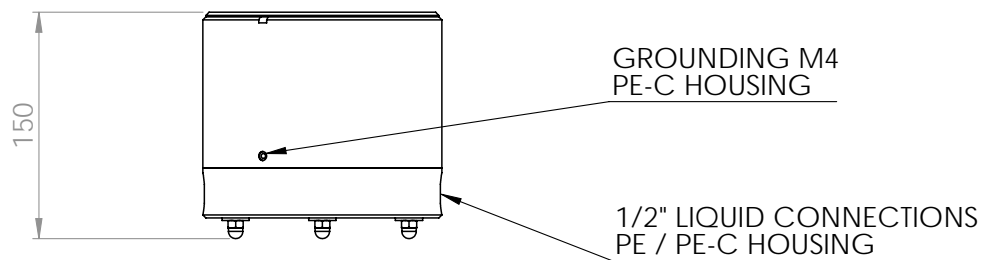
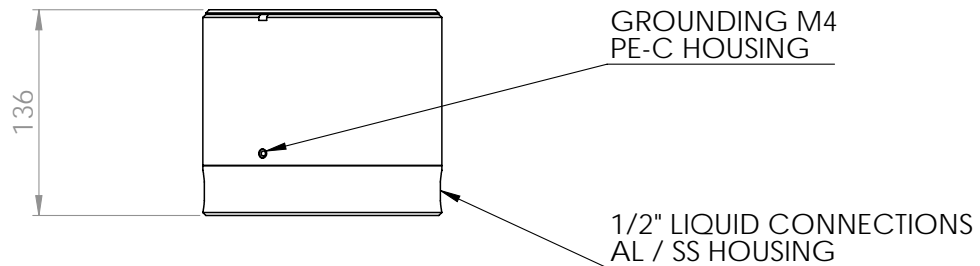
PD-S15 AA TO TB

NOTE not all combinations are available

II 2 GD c II BTx

Verderair

PD-S15



Dimensions in mm



Verderair

PD-S25

Description

Air Operated Double Diaphragm Pumps are having a pulsating flow. This will lead to vibrations and pipe-line losses due to the pressure changes in the discharge pipeline. In processes where pulsation in the fluid stream needs to be minimized, the Verderair PD-S dampeners can be used.



Your benefits

- Less vibration in the installation
- Smoother flow
- Better accuracy of instrumentation in the discharge line
- Less maintenance cost of the pipework

Technical data		Internals		
Weight [kg]	Fluid & air section	GG	4,3	
		EA	4,7	
		AG	5,9	
		AA	6,3	
		SG	11,7	
		SA	12,1	
Temperature [°C]	Fluid & air section	GG - EA	EO - TO	70
		AG - SG	EO - TO	80
		AA - SA	EO - TO	120
Air connection				R 1/4
Liquid connections				1"

Code PD-S25 No.1 No.2 No.3 No.4.			
No.1 Fluid section ⚠ A = Aluminium ⚠ S = Stainless Steel ⚠ G = Conductive PE E = UHMW PE	No.2 Air section A = Polyamide ⚠ G = Conductive PE	No.3 Diaphragms EO = EPDM overmolded TO = PTFE overmolded	No. 4 Connections TB = Threaded BSP(f) TN = Threaded NPT(f)

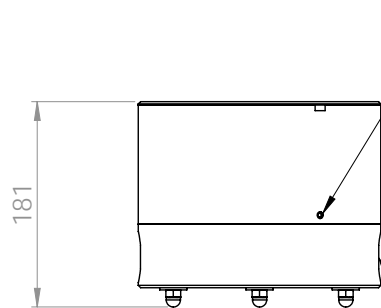
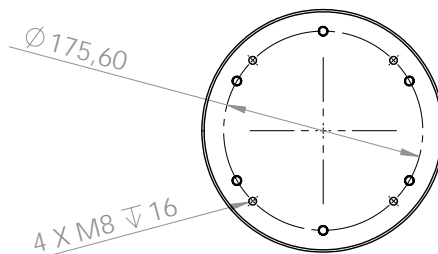
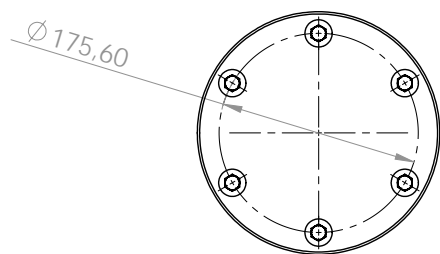
EXAMPLE DAMPENED TYPE
PD-S25 AA TO TB

NOTE not all combinations are available

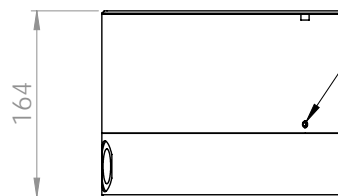
⚠ II 2 GD c II BTx

Verderair

PD-S25



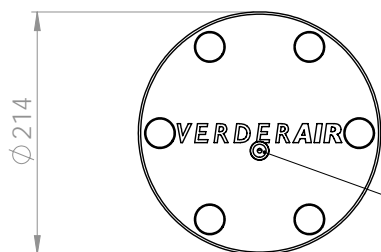
GROUNDING M4
PE-C HOUSING



GROUNDING M4
PE-C HOUSING

1" LIQUID CONNECTIONS
PE / PE-C HOUSING

1" LIQUID CONNECTIONS
AL / SS HOUSING



R 1/4"
AIR INLET

Dimensions in mm

Verderair

PD-S40

Description

Air Operated Double Diaphragm Pumps are having a pulsating flow. This will lead to vibrations and pipe-line losses due to the pressure changes in the discharge pipeline. In processes where pulsation in the fluid stream needs to be minimized, the Verderair PD-S dampeners can be used.



Your benefits

- Less vibration in the installation
- Smoother flow
- Better accuracy of instrumentation in the discharge line
- Less maintenance cost of the pipework

Technical data		Internals		
Weight [kg]	Fluid & air section	GG	10,4	
		EA	11,4	
		AG	14,1	
		AA	15,1	
		SG	26,5	
		SA	27,5	
Temperature [°C]	Fluid & air section	GG - EA	EO - TO	70
		AG - SG	EO - TO	80
		AA - SA	EO - TO	120
Air connection				R 1/4
Liquid connections				1 1/2"

Code PD-S40 No.1 No.2 No.3 No.4.			
No.1 Fluid section ⚠ A = Aluminium ⚠ S = Stainless Steel ⚠ G = Conductive PE E = UHMW PE	No.2 Air section A = Polyamide ⚠ G = Conductive PE	No.3 Diaphragms EO = EPDM overmolded TO = PTFE overmolded	No. 4 Connections TB = Threaded BSP(f) TN = Threaded NPT(f)

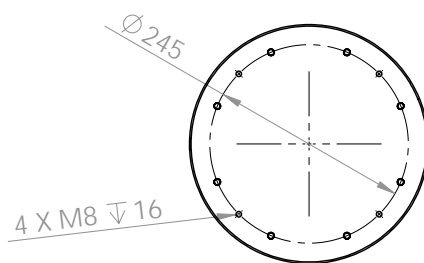
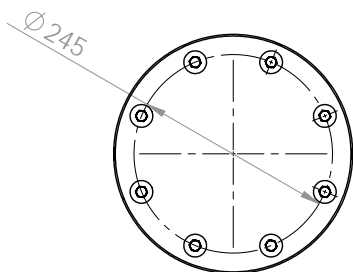
EXAMPLE DAMPENER TYPE
PD-S40 AA TO TB

NOTE not all combinations are available

⚠ II 2 GD c II BTx

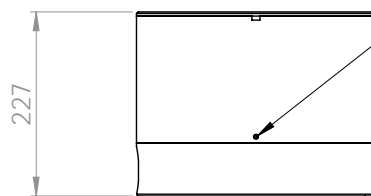
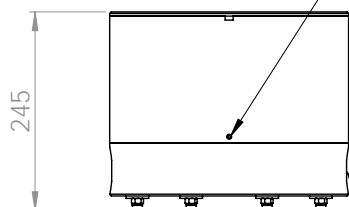
Verderair

PD-S40



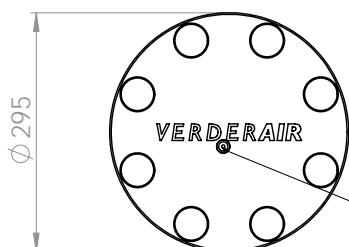
GROUNDING M4
PE-C HOUSING

GROUNDING M4
PE-C HOUSING



1-1/2" LIQUID CONNECTIONS
PE / PE-C HOUSING

1-1/2" LIQUID CONNECTIONS
AL / SS HOUSING



R 1/4"
AIR INLET

Dimensions in mm

Verderair

PD-S50

Description

Air Operated Double Diaphragm Pumps are having a pulsating flow. This will lead to vibrations and pipe-line losses due to the pressure changes in the discharge pipeline. In processes where pulsation in the fluid stream needs to be minimized, the Verderair PD-S dampeners can be used.



Your benefits

- Less vibration in the installation
- Smoother flow
- Better accuracy of instrumentation in the discharge line
- Less maintenance cost of the pipework

Technical data		Internals		
Weight [kg]	Fluid & air section	GG	15,4	
		EA	16,8	
		AG	21,5	
		AA	22,9	
		SG	42,1	
		SA	43,5	
Temperature [°C]	Fluid & air section	GG - EA	EO - TO	70
		AG - SG	EO - TO	80
		AA - SA	EO - TO	120
Air connection				R 1/4
Liquid connections				2"

Code PD-S50 No.1 No.2 No.3 No.4.			
No.1 Fluid section ⚠ A = Aluminium ⚠ S = Stainless Steel ⚠ G = Conductive PE E = UHMW PE	No.2 Air section A = Polyamide ⚠ G = Conductive PE	No.3 Diaphragms EO = EPDM overmolded TO = PTFE overmolded	No. 4 Connections TB = Threaded BSP(f) TN = Threaded NPT(f)

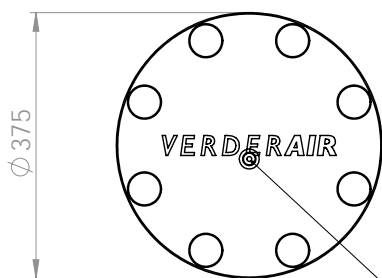
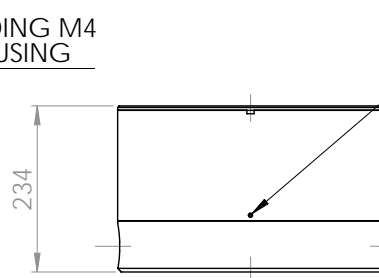
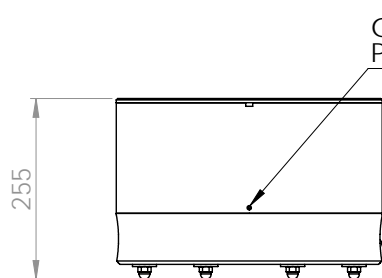
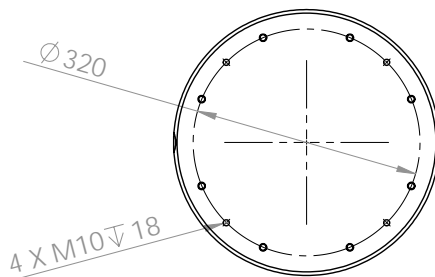
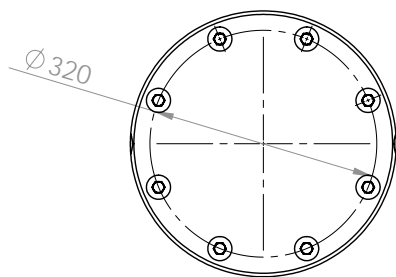
EXAMPLE DAMPENER TYPE
PD-S50 AA TO TB

NOTE not all combinations are available

⚠ II 2 GD c II BTx

Verderair

PD-S50



2" LIQUID CONNECTIONS
PE / PE-C HOUSING

2" LIQUID CONNECTIONS
AL / SS HOUSING

R 1/2"
AIR INLET

Dimensions in mm

Verderair

PD-S80

Description

Air Operated Double Diaphragm Pumps are having a pulsating flow. This will lead to vibrations and pipe-line losses due to the pressure changes in the discharge pipeline. In processes where pulsation in the fluid stream needs to be minimized, the Verderair PD-S dampeners can be used.



Your benefits

- Less vibration in the installation
- Smoother flow
- Better accuracy of instrumentation in the discharge line
- Less maintenance cost of the pipework

Technical data		Internals		
Weight [kg]	Fluid & air section	GG	17,8	
		EA	19,2	
		AG	24,7	
		AA	26,1	
		SG	50,7	
		SA	52,1	
Temperature [°C]	Fluid & air section	GG - EA	EO - TO	70
		AG - SG	EO - TO	80
		AA - SA	EO - TO	120
Air connection		R 1/4		
Liquid connections		3"		

Code PD-S80 No.1 No.2 No.3 No.4.		
No.1 Fluid section ⚠ A = Aluminium ⚠ S = Stainless Steel ⚠ G = Conductive PE E = UHMW PE	No.2 Air section A = Polyamide ⚠ G = Conductive PE	No.3 Diaphragms EO = EPDM overmolded TO = PTFE overmolded No. 4 Connections TB = Threaded BSP(f) TN = Threaded NPT(f)

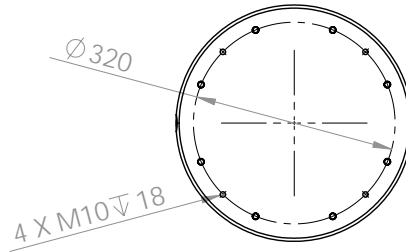
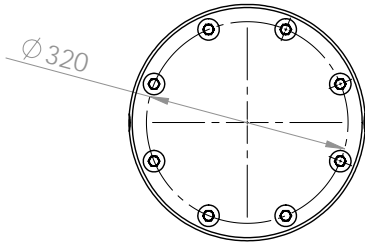
EXAMPLE DAMPENER TYPE
PD-S80 AA TO TB

NOTE not all combinations are available

⚠ II 2 GD c II BTx

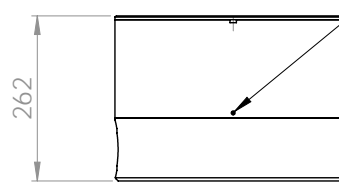
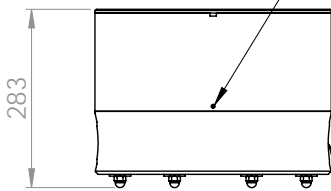
Verderair

PD-S80



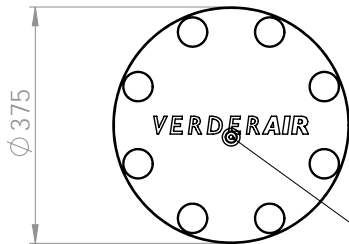
GROUNDING M4
FOR PE-C HOUSING

GROUNDING M4
FOR PE-C HOUSING



3" LIQUID CONNECTIONS
PE / PE-C HOUSING

3" LIQUID CONNECTIONS
AL / SS HOUSING



R 1/2"
AIR INLET

Dimensions in mm



Архангельск (8182)63-90-72	Иваново (4932)77-34-06	Магнитогорск (3519)55-03-13	Пермь (342)205-81-47	Сургут (3462)77-98-35
Астана (7172)727-132	Ижевск (3412)26-03-58	Москва (495)268-04-70	Ростов-на-Дону (863)308-18-15	Тверь (4822)63-31-35
Астрахань (8512)99-46-04	Иркутск (395)279-98-46	Мурманск (8152)59-64-93	Рязань (4912)46-61-64	Томск (3822)98-41-53
Барнаул (3852)73-04-60	Казань (843)206-01-48	Набережные Челны (8552)20-53-41	Самара (846)206-03-16	Тула (4872)74-02-29
Белгород (4722)40-23-64	Калининград (4012)72-03-81	Нижний Новгород (831)429-08-12	Санкт-Петербург (812)309-46-40	Тюмень (3452)66-21-18
Брянск (4832)59-03-52	Калуга (4842)92-23-67	Новокузнецк (3843)20-46-81	Саратов (845)249-38-78	Ульяновск (8422)24-23-59
Владивосток (423)249-28-31	Кемерово (3842)65-04-62	Новосибирск (383)227-86-73	Севастополь (8692)22-31-93	Уфа (347)229-48-12
Волгоград (844)278-03-48	Киров (8332)68-02-04	Омск (3812)21-46-40	Симферополь (3652)67-13-56	Хабаровск (4212)92-98-04
Вологда (8172)26-41-59	Краснодар (861)203-40-90	Орел (4862)44-53-42	Смоленск (4812)29-41-54	Челябинск (351)202-03-61
Воронеж (473)204-51-73	Красноярск (391)204-63-61	Оренбург (3532)37-68-04	Сочи (862)225-72-31	Череповец (8202)49-02-64
Екатеринбург (343)384-55-89	Курск (4712)77-13-04	Пенза (8412)22-31-16	Ставрополь (8652)20-65-13	Ярославль (4852)69-52-93
	Липецк (4742)52-20-81			

Россия (495)268-04-70 Киргизия (996)312-96-26-47 Казахстан (772)734-952-31

Единый адрес для всех регионов: www.verderair.nt-rt.ru || vru@nt-rt.ru